

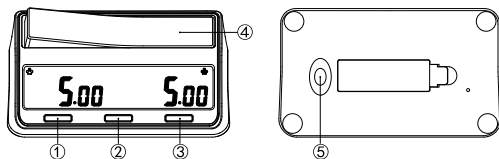
## PQ9917 棋钟使用说明

## 一、功能特点

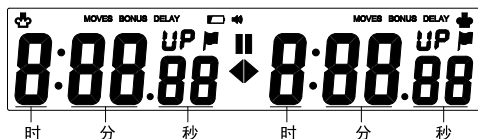
- 具备正计时、倒计时、奖励、延时等计时规则；
- 可设置自定义时间，最大计时达10个小时；
- 可查看或修改已走步数；可开启或关闭声音提示；
- 大屏显示，1节5号(AA)电池供电。
- 具备正计时(UP)开关设置，实现倒计时结束后自动转正计时功能；
- 左右两边可设置不同的计时参数，比赛中途可修改时间；
- 自动保存关机前最后一次设置的参数；

## 二、按键说明

- ①【+】键:设置时,按一下数值加1; 暂停时,长按2秒进入步数修改画面;
- ②【▶||】键:按一下计时开始或暂停; 长按2秒进入参数设置;
- ③【-】键:设置时,按一下数值减1; 长按2秒开启或关闭声音提示;
- ④【走棋】键:切换左右计时;
- ⑤【ON/OFF】键:开/关机功能;



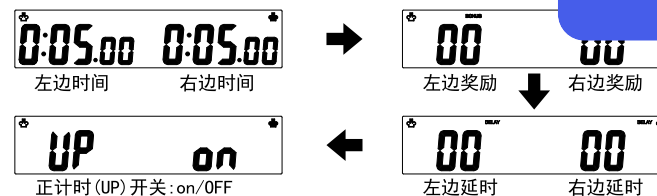
## 三、显示说明



白色棋手图标;	黑色棋手图标;	MOVES 表示当前处于步数画面;
超时告负的一方显示黑旗图标;		BONUS 表示当前开启奖励功能;
开启声音提示时显示喇叭图标;		DELAY 表示当前开启延时功能;
计时暂停图标;		UP 当正计时开始后显示UP;
表示左边正在计时;  表示右边正在计时;	当电池电量低时会闪烁低电图标;	

## 四、操作说明

- 1、开/关机**  
按一下产品底部的【ON/OFF】键实现产品开/关机;  
下次开机时,将显示最后一次设置的计时参数,重装电池后再开机,将恢复为默认的计时参数。
- 2、计时开始/暂停**  
开机后,先按【走棋】键,选择左右两边的黑/白方图标(♣/♠),然后按一下【▶||】键,开始计时(白方先计时),计时开始后,每按一下【走棋】键将切换左右计时,每按一下【▶||】键,计时将暂停或继续。  
特别注意:如果在计时暂停时不小心切换了【走棋】键,将会显示操作有误的提示画面“Error”,需要将【走棋】键切回来才可继续计时。
- 3、重新开始**  
按产品底部的【ON/OFF】键将产品关机后再开机,即可重新开始。
- 4、开启/关闭声音**  
长按【-】键2秒,即可开启或关闭声音提示。  
开启声音后,当时间剩余最后10秒时会发出“滴”一声提示,当时间剩余最后5秒时,每秒会发出“滴”一声提示,计时结束时会发出持续2秒的“滴”声提示。
- 5、参数设置操作**  
开机后,长按【▶||】键2秒,进入计时参数设置画面,左边第一个数字开始闪烁,操作如下:  
每按一下【+】或【-】键闪烁的数值加1或减1,每按一下【▶||】键切换下一个数字闪烁,修改完最后一个参数后按一下【▶||】键退出设置,也可以在修改中途长按【▶||】键2秒退出设置。  
参数设置顺序:左边基本时间(时/分/秒)→右边基本时间(时/分/秒)→左边奖励时间→右边奖励时间→左边延时时间→右边延时时间→UP(ON/OFF),如下图所示。



参数设置范围:基本时间:0-9小时59分59秒,奖励时间:0-59秒,延时时间:0-59秒,正计时(UP)开关: on(开启)/OFF(关闭);  
特别注意1:UP设为on:表示开启正计时,倒计时结束后自动转为正计时;  
UP设为OFF:表示关闭正计时,倒计时结束后计时停止;  
特别注意2:“奖励”、“延时”设置为0,表示关闭奖励、延时功能;  
如果“奖励”和“延时”都被设为大于0的参数,将优先生效奖励功能,延时功能不生效;  
若要开启“延时”功能,必须将左右两边的“奖励”都设置为0。

## 6、计时规则说明

## 6.1、【正计时】规则

时间到达9小时59分59秒后计时停止。  
参数设置方法:将基本时间/奖励/延时都设为0,正计时(UP)设为on,即可实现【正计时】规则。

## 6.2、【倒计时】规则

先用完全时间的一方亮黑旗,计时停止,另一方可以继续走完剩余时间。  
参数设置方法:将基本时间设为大于0,将奖励、延时都设为0,正计时(UP)设为OFF,即可实现【倒计时】规则。

## 6.3、【倒计时+奖励】规则

计时开始后,每走完一步加一次奖励;  
先用完全时间的一方亮黑旗,计时停止,另一方可继续走完剩余时间。  
参数设置方法:将基本时间设为大于0,奖励设为大于0、延时设为0,正计时(UP)设为OFF,即可实现【倒计时+奖励】规则。

## 6.4、【倒计时+延时】规则

计时开始后,每走一步时都会先运行延长时间,  
若在延长时间内走完一步则基本时间不变,若用完延长时间则开始运行基本时间;  
先用完全时间的一方亮黑旗,计时停止,另一方可继续走完剩余时间。  
参数设置方法:将基本时间设为大于0,奖励设为0、延时设为大于0,正计时(UP)设为OFF,即可实现【倒计时+延时】规则。

## 6.5、【倒转正】功能

倒计时结束后自动转为正计时(先用完倒计时的一方会显示黑旗),时间到达9小时59分59秒后计时停止。  
备注:奖励或延时只在倒计时时有效,当开始正计时后,将不再有奖励或延时功能。  
参数设置方法:可将6.2/6.3/6.4规则里的正计时(UP)设置为on,即可实现【倒转正】功能;

## 7、查看/修改步数

先将计时暂停,然后长按【+】键2秒,即可进入“步数”修改画面,  
进入后,可按【+】或【-】键对步数进行加减操作,按一下【▶||】键退出步数修改返回计时暂停画面。

## 8、计时中途修改时间

先将计时暂停,然后长按【▶||】键2秒,即可进入时间修改画面,  
每按一下【+】或【-】键闪烁的数值加1或减1,每按一下【▶||】键切换下一个数字闪烁,  
修改完最后一个数字后按一下【▶||】键退出设置,也可以在修改中途长按【▶||】键2秒退出设置。

## 五、使用保养

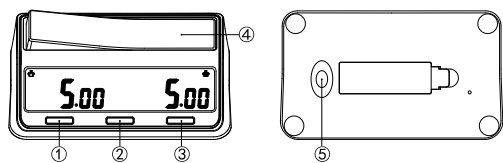
- 1、避免长时间在烈日或高温下放置,以免显示变黑;
- 2、切勿靠近强磁场源,如大型扬声器等,以免产品失效;
- 3、避免与腐蚀性液体接触,避免硬物撞击,以免损坏。

# User Manual

## I Key Features

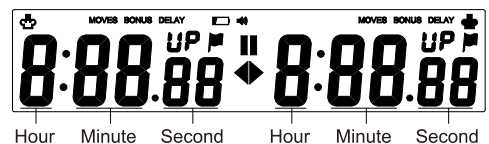
- Easy to set up and use
- Count up & count down ,bonus/increment and delay.
- Supports turn on/off the count-up mode .
- Ability to the time always count down to 0.00 and then count upwards.
- Preset-table countdown timer ,maximum 10 hours.
- Create and save a custom timing mode for each player,easy to change time during games.
- Ability to check and change number of moves in all timing modes
- Audible alarm can be turned on or off
- Large LCD display , power supply :1pc AA battery ( Not included )

## II Key Description



- ① **[+]**When timer is in setting mode, pressing this button one time will increase the value of the flashing field by 1. In pause mode, touching and holding this button for two seconds will change the number of moves.
- ② **[>|]** When timer is in play mode, pressing this button one time will start or pause the current timing mode.Touching and holding this button for two seconds will enter setting mode.
- ③ **[-]**When timer is in setting mode pressing this button one time will decrease the value of the flashing field by 1.Sound on / off when holding the button for two seconds.
- ④ **[Lever]** When one side of the lever is depressed ,the timer on the opposite side will count up or down.
- ⑤ **[ON/OFF button ]** Located at the bottom of the clock: switch on and off or reset for next game.

## III Display



- ♣♣ : Indicates which player is white and which player is black.
- ⏰ : When displayed the player's time has expired.
- 🔊 : When displayed sounds are turned on.
- ⏸ : Indicates the timer is paused.
- ◀ : Indicates the left side of the timer is running.
- ▶ : Indicates the right side of the timer is running.

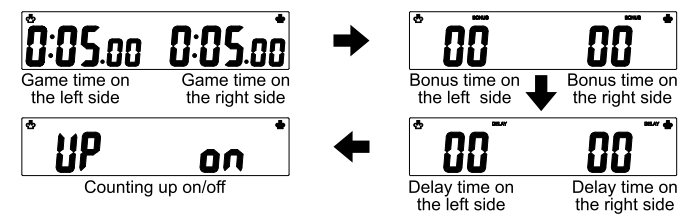
- MOVES** :Displays the number of moves.
- BONUS** :Displayed when bonus time is enabled.
- DELAY** :Displayed when delay time is enabled.
- UP** :Displayed when count up time is active.
- 🔋 : Low Battery.

## III Operating Instructions

- 1) On/Off:**  
After installing the AA battery, press the **[ON/OFF]** switch on the bottom of the timer to turn on.When the timer is turned off and the battery remains installed the timer will save the last used timing settings and will start with those settings.  
When the battery is removed and rein-stalled the timer will beep when turned on and the timer will return to the default setting displayed below with no delay or bonus and the alarm turned off.
- 2) Time start or pause :**  
Pressing the **[Lever]** key to choose ♣♣ player, white player play first.Press the **[>|]** button to start the time.And adjust the left/right lever so the side supposed to start. Pressing the **[>|]** button to pause/restart the time during the game.  
**Special notice:** if change the **[Lever]** key during pause, the " Error " will be displayed. The time can go on smoothly only switching back the **[Lever]** key.

- 3) Restart**  
Turn off the **[ON/OFF]** button on the bottom of the timer and switch on it again .
- 4) Alarm on/ off**  
Press and hold the **[-]** button for two seconds to turn on or off alarm. When sound is activated the 🔊 icon is shown in the display and a beep will be heard at 10 seconds and each second of the last 5 second of a period. At zero seconds there will be a long beep.

- 5)Settings Mode**  
After turn on the clock, to set or change the time press and hold the **[>|]** button for two seconds to enter the settings mode. The first digit on the left side of the timer will be flashing. Use the **[+]** or **[-]** buttons to increase or decrease that value and then press the **[>|]** button to move to the next digit. Follow these steps to set the hours, minutes and seconds on the left side of the timer and then press the **[>|]** button to move to the first digit on the right side of the timer. You will notice that the times set on the left side of the timer are automatically copied to the right side. If you are using the same time for both sides of the timer you can use the **[>|]** button to quickly move through the hours, minutes and seconds without making changes. After all setting , press the **[>|]** button to exit the setting mode or press and hold the **[>|]** for two seconds to exit setting mode during setting.  
**Setting sequence as below :**  
Game time( hour/minute/second )on the left side --- game time( hour/minute/second ) on the right side ---bonus time on the left side ---bonus time on the right side ---delay time on the left side ---delay time on the right side ---UP( ON/OFF ).



- Time setting range:**Game time: 0 - 9h59'59". Bonus time: 0-59". Delay time :0-59". Counting up switch:ON/ OFF
- Special notice 1:** If "Up on" icon is displayed ,the count up time mode will be active ,the game time will be from 0:00.00 to count upwards automatically after count down . If "Up OFF" icon is displayed, it shows count up mode will be not active , the game time will be end at 0:00.00
- Special notice 2:**if bonus and delay's time setting will be 0, it will show turn off the bonus and delay feature .if both bonus time and delay time can be set to the value more than zero ,the bonus feature will be prior active .the delay feature can be only active under the bonus time is off or zero.

- 6) Check and change the move number.**  
In pause mode,press and hold **[+]**button 2 seconds to enter the move number modification mode. Use **[+]** and **[-]** to adjust the digit or use **[>|]** to move onto the next digit. When all moves have been modified, press the **[>|]** key to exit .
- 7) Change the time during a game**  
Press **[>|]** to pause the game,then press and hold **[>|]** for 2 seconds to enter the setting mode. The very left digit is flashing. Use **[+]** and **[-]** to adjust the digit or use **[>|]** to move onto the next digit. When all moves have been modified, press the **[>|]** to exit or pressing and hold this button for 2 seconds to exit during setting .

## VI Maintenance

- 1.Avoid prolonged exposure to the sun or high temperature to avoid turning black.
- 2.Avoid contact with water or corrosive liquids to avoid damage, this product is not water resistant.
- 3.Keep it away from high static objects, high magnetic field source, such as the screen, speakers and so on, to make sure not to cause damage or failure of the product
- 4.Please replace batteries when the symbol 🔋 shows up, meanwhile please make sure the battery were put in the right direction.

**Product performance standards: GB/T22778-2008.**  
**Warranty: one year, battery and physical damage is excluded.**